

DETAILS

Our work relates to the hand as well as the eye; making buildings a pleasure as well as useful depends on satisfying all the senses. We work with the best artists and craftspeople, in a collaborative manner, producing unique work, to achieve this.



For further information please contact:

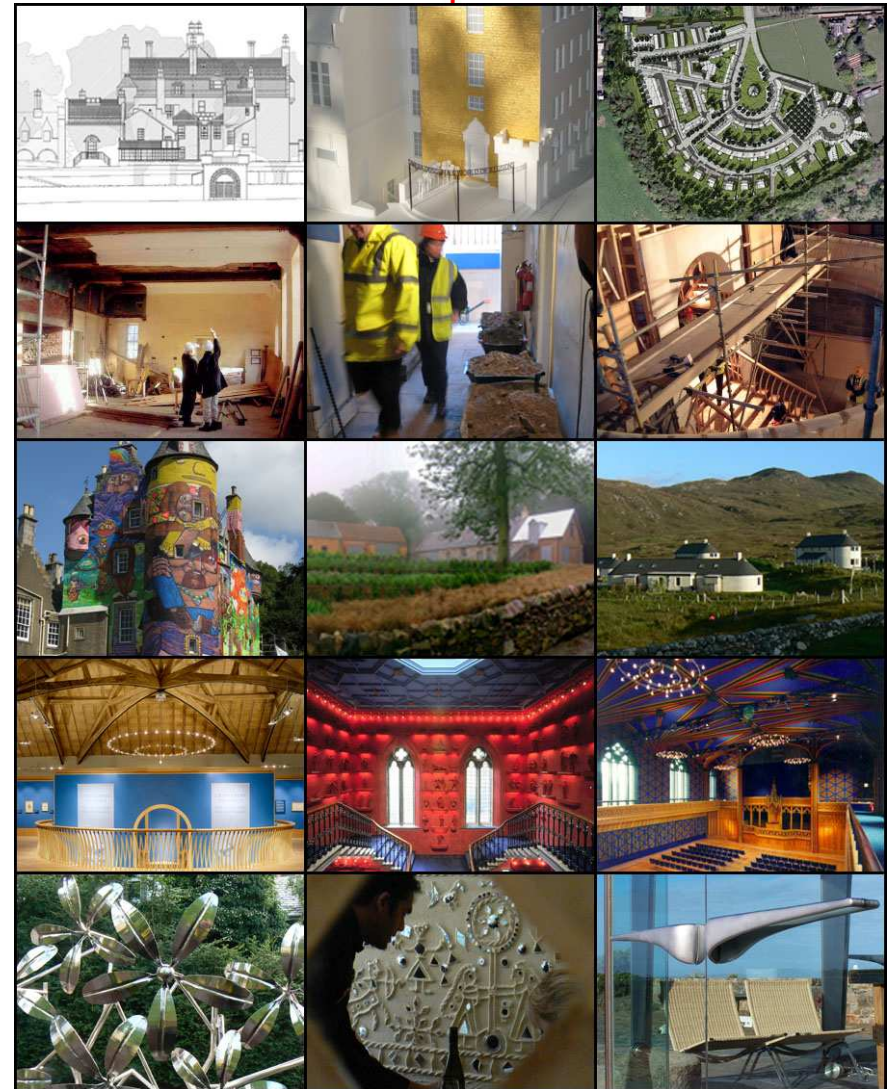
Benjamin Tindall, Partner
Chris McDonald, Manager

ben@benjamintindallarchitects.co.uk
chris@benjamintindallarchitects.co.uk

17 Victoria Terrace, EDINBURGH EH1 2JL Tel. 0131 220 3366

www.BenjaminTindallArchitects.co.uk

BENJAMIN TINDALL ARCHITECTS



THE ART & CRAFT OF ARCHITECTURE
www.BenjaminTindallArchitects.co.uk

APPROACH

To provide the best possible service we give close personal attention to client's needs. In this way, in more than twenty five years of practice, we have built up an exceptional reputation for creativity and integrity with close attention paid to environmental impact and practicality. We treat all projects in a collaborative, personal and fundamental manner. Design flair and a practical approach are combined with high quality of workmanship. Along with originality and ingenuity, we believe our traditional standards of professional service provide a very cost effective service. Our record of delivering projects to budget and assisting with fund-raising is exceptional. This Brochure gives our approach to the very varied work we do.

PROJECTS

Our clients ask for work of all sizes and types of work and our experience is correspondingly broad. It varies from planning and development and new buildings to meticulous conservation, from landscape to product design. We believe this breadth of experience is essential for producing long-lasting solutions. Our clients range from low-income groups to institutions of international standing and Local Authorities to private individuals. Geographically our work is spread from the Channel Isles to the Orkney Islands. Many are illustrated on our website:

www.BenjaminTindallArchitects.co.uk

OFFICE

The Practice has two Partners, Benjamin Tindall and Paul Harding an Associate, Mark Thomasson, and five staff working from our studio in the Old Town of Edinburgh. Our studio, a four storey building with superb views over Edinburgh's Southside, has been repaired and altered for ourselves and our tenants.

Potential Clients should come and visit the practice for themselves.

CONSERVATION

Ben Tindall has RIAS Accreditation in Conservation Architecture, at the highest level, Level A, qualifying him to carry out "Work with a high content of specialist conservation work which requires a great amount of detailed specification and inspection work..." This has included work to many of Scotland's most important buildings. Organising Conservation Management Plans is invaluable for providing a tool for the sound use of limited resources.

Our approach is not routine and automatic, simply following 'best practice' but rather getting a very full understanding of the original design and workmanship using our practical knowledge. Unless this is done it is impossible to appreciate the patina of a building and do sensitive work. Using local materials and skills is often part of the success of the work.



CHURCHES

Up-dating and altering churches to contemporary needs and uses requires an unusual degree of sensitivity as well as creativity.

The provision of good access for all can be particularly difficult and the Practice has been noted for excellence in this field. Our ability to use colour is perhaps unusual. Our contemporary 'chandelier' light fittings, first designed for The Hub, Edinburgh's Festival Centre, are beginning to become widely used.

Working with committees and fund-raising are essential parts of the work and we are well used to doing, sometimes requiring as much creativity and effort as the work itself.



PLANNING & DEVELOPMENT

As professional members of the Princes Foundation, the Practice believes in prior and good consultation and properly understanding of a place before considering place-making. It takes a human approach, considering employment a fundamental requisite, along with the pleasure an attractive place can bring. Sustainability takes many forms, but social and economic sustainabilities are just as important as embodied energy and energy in use. Local traditions, materials and craftsmanship are also vital to making places that people like.

The assistance of excellent Landscape Architects and Planning Consultants is often invaluable, as well as engineers with a sympathy for prioritising pedestrians and an ability to deal with utility companies and government agencies.



DOMESTIC

The needs and aspirations of private individuals are endlessly varied, whether it is a new house, a wonderful bathroom or a piece of furniture. Our broad experience allows us to bring the best combination of factors to bear.

A concern for the setting and landscape, creative planning, interest in good natural and artificial lighting and good craftsmanship assist in solutions that work well. Decoration and furnishings are also considered in detail.

Excellent cost control is achieved with the early advice of good Quantity Surveyors, the provision of good information to contractors and working closely with all concerned.



INSTITUTIONAL & COMMERCIAL WORK

An appreciation of how to harness creativity to the economic realities and fulfilment of economic goals, often within difficult timescales, allows objectives to be met. Fund-raising is a competitive matter and often an important component of our work, requiring varied presentations to give funders what they need.

Popular satisfaction is also our aim, to ensure that people enjoy and remember the work. 'Style' is a varied matter, and we enjoy working in all styles, as appropriate. Colour and the incorporation of art or good workmanship are important components.

Practical aspects which we pay a great deal of attention to are acoustic comfort, good lighting and the careful selection of furniture.

